

# Reveal

Combination Convertible Service Above Refrigerated Self-Service Case

Structural Concepts®

- **NR3651RRSSV** 35-3/4"L x 33"D x 50-3/4"H
- **NR4851RRSSV** 47-3/4"L x 33"D x 50-3/4"H
- **NR6051RRSSV** 59-3/4"L x 33"D x 50-3/4"H
- **NR7251RRSSV** 71-3/4"L x 33"D x 50-3/4"H

## Included

- NOTE: Glass warranty only applicable to first point of delivery
- Breeze~E (Type-II) w/ EnergyWise s/c refrigeration
- Blue Fin coated coil
- Clear glass shelf, lighted (LED 3500K) in upper display
- Compressor air intake from rear and out front panel at toe kick. Front panel cannot be blocked.
- Condensate pan (self-contained refrig. only)
- Convertible baffle in upper display
- Fixed vertical glass
- Integrated average product temperature of 40°F or less
- LED top light
- One piece formed ABS plastic tub
- One year parts & labor; 5 year compressor warranty



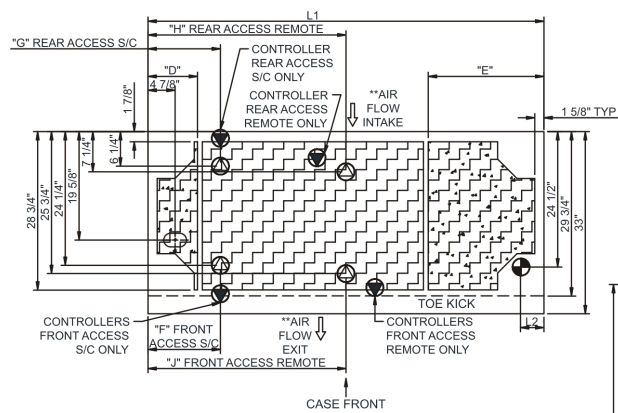
Specify	Standard Features	Additional Options
<b>FRAME EXTERIOR COLOR</b>	• Black	• Painted (non-stock colors, specify RAL#) • Painted (stock colors, specify RAL#) • Stainless steel
<b>INTERIOR COLOR</b>	• Black	• NOTE: Interior color must be FDA & NSF approved • Painted (stock colors, specify RAL#) • Stainless steel
<b>PANEL EXTERIOR</b>	• Laminated (non-premium) Confirm pattern/grain direction	• Laminated (premium) Confirm pattern/grain direction • Stainless steel
<b>BASE SUPPORT</b>	• Adjustable, locking casters	• 6"H stainless steel legs • Shims (standard w/ remote)
<b>LOWER FRONT PANEL</b>	• Black	• Painted (stock colors, specify RAL#) • Stainless steel
<b>LOWER REAR</b>	• Solid back panel	• Clear glass rear sliding doors • Reflective glass rear sliding doors
<b>LOWER REAR PANEL</b>	• Black	• Painted (stock colors, specify RAL#) • Stainless steel
<b>UPPER REAR</b>	• Clear glass rear sliding doors	• Reflective glass rear sliding doors
<b>LIGHTS</b>	• LED 3500K w/ frosted lens	• LED 3000K w/ frosted lens • LED 4000K w/ frosted lens
<b>ELECTRICAL CONNECT</b>	• 10' Straight blade power cord (self-cont.)	• 10' Locking power cord (self-cont.) • Electrical leads (remote)
<b>REFRIGERATION</b>	• Breeze~E (Type-II) w/ EnergyWise s/c refrigeration (rear access)	• Breeze~E (Type-II) w/ EnergyWise s/c refrigeration (front access) • Remote w/thermostat, solenoid & TXV (front access) • Remote w/thermostat, solenoid & TXV (rear access)
<b>MISCELLANEOUS</b>		• Lower rear door lock • Rear wrapping board (n/a w/lower rear doors) • Second year parts & labor warranty (excludes compressor) • Upper rear door lock
<b>ACCESSORIES</b>		• 1"H Full depth display riser(s) for lower display • 2"H Full depth display riser(s) for lower display • Clean Sweep® coil cleaner (n/a w/remote) • Clear acrylic security cover, removable, locking • Night curtain, retractable, non-locking

## Combination Convertible Service Above Refrigerated Self-Service Case

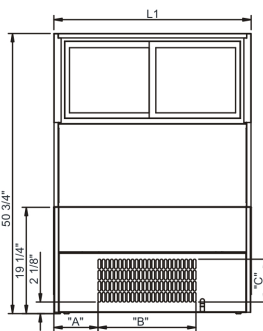
## Structural Concepts

<b>Intended Environment:</b> Type II - Designed to operate in ambient conditions of 80°F and 60% relative humidity unless noted otherwise in system information below.		
<b>Zone</b>	<b>Intended Product To Be Displayed</b>	<b>Warmest Avg Prod Temp ° F</b>
1	Packaged / unpackaged refrigerated products	40

### PLAN VIEW

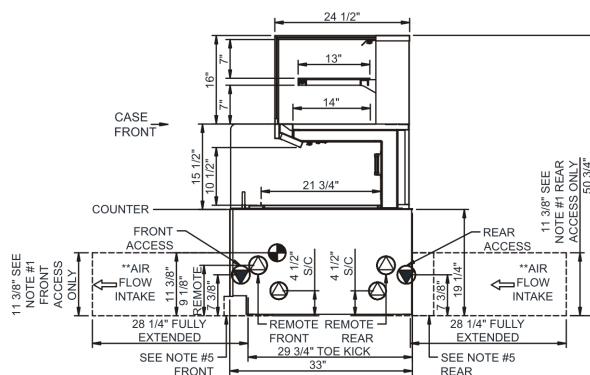


	"D"	"E"	"F"	"G"	"H"	"J"
NR3651RRSSV	N/A	N/A	7 1/8"	7 1/8"	17 7/8"	17 7/8"
NR4851RRSSV	9"	9"	13 1/8"	7 1/8"	23 7/8"	23 7/8"
NR6051RRSSV	9"	9"	13 1/8"	13 1/8"	29 7/8"	29 7/8"
NR7251RRSSV	9"	21"	13 1/8"	13 1/8"	35 7/8"	35 7/8"



	"A"	"B"	"C"
NR3651RRSSV	8"	17 3/4"	7 3/4"
NR4851RRSSV	14"	17 3/4"	7 3/4"
NR6051RRSSV	13"	30 1/2"	7 3/4"
NR7251RRSSV	25"	30 1/2"	7 3/4"

### SIDE VIEW



1. 11 3/8" TALL, FULL WIDTH OF CASE OPENING IN CABINET OR COUNTER IS REQUIRED TO PULL OUT REFRIGERATION SYSTEM.
2. BACK OF COUNTER / CABINET MUST BE VENTED PROPERLY FOR ADEQUATE AIRFLOW TO CONDENSER.
3. \*\*REPRESENTS REAR PULLOUT REFRIGERATION. AIR FLOW INTAKE AND EXIT DETAILS ARE REVERSED WITH FRONT PULLOUT REFRIGERATION OPTION.
4. SELF-CONTAINED ACCESS ONLY BY PULLING OUT CONDENSER UNIT.
5. 4" OPEN AREA CLEARANCE REQUIRED FOR AIR FLOW FRONT AND REAR OF CASE.

NOTE: ALL DIMENSIONS APPROXIMATE



**ELECTRICAL JUNCTION BOX**  
(SUPPLIED WITH 6" LEADS OR POWER CORD)



LOCATION OF DRAIN TUBE FOR REMOTE REF. ONLY (SUPPLIED WITH  $\frac{3}{4}$ " OR  $1\frac{1}{2}$ " PVC TUBE).



### REFRIGERATION LINE CONNECTION



REMOTE FLOOR SINK & UTILITIES  
ACCESS AREA.



**SELF-CONTAINED CASE SERVICE ACCESS AREA**



DRY CASE SERVICE ACCESS AREA.

Model Technical Specifications																
Model	L"	L1"	L2"	System Circuit Volts			Phs	Freq	Amps ***	Watts	Wires	NEMA Plug	SST	Conv. Rack RTU/H	Para. Rack RTU/H	Est Wt
NR3651RRSSV	N/A	35.75	4.13	Remote(Type I)	Circuit #1	110-120	1	60	1.37	70	2+G	Leads Multiple	20.00	1620	1500	800
				Remote(Type II)	Circuit #1	110-120	1	60	1.37	70	2+G	Leads Multiple	20.00	1944	1800	
				Self-Contained (R513A)	Circuit #1	110-120	1	60	9.85	789	2+G	5-15P or L5-15P	N/A	N/A	N/A	
NR4851RRSSV	N/A	47.75	4.13	Remote(Type I)	Circuit #1	110-120	1	60	1.74	98	2+G	Leads Single	20.00	2117	1960	950
				Remote(Type II)	Circuit #1	110-120	1	60	1.74	98	2+G	Leads Single	20.00	2592	2400	
				Self-Contained (R513A)	Circuit #1	110-120	1	60	15.22	1,231	2+G	5-20P or L5-20P	N/A	N/A	N/A	
NR6051RRSSV	N/A	59.75	4.13	Remote(Type I)	Circuit #1	110-120	1	60	1.85	116	2+G	Leads Single	20.00	2635	2440	1,100
				Remote(Type II)	Circuit #1	110-120	1	60	1.85	116	2+G	Leads Single	20.00	3154	2920	
				Self-Contained (R513A)	Circuit #1	208-240	1	60	11.26	1,665	2+G	6-15P or L6-15P	N/A	N/A	N/A	
NR7251RRSSV	N/A	71.75	4.13	Remote(Type I)	Circuit #1	110-120	1	60	1.92	129	2+G	Leads Single	20.00	3154	2920	1,200
				Remote(Type II)	Circuit #1	110-120	1	60	1.92	129	2+G	Leads Single	20.00	3758	3480	
				Self-Contained (R513A)	Circuit #1	208-240	1	60	11.29	1,677	2+G	6-15P or L6-15P	N/A	N/A	N/A	

\*\*\* Does not include electric defrost on freezer models.

**Regulatory Approvals:**

All Models	<p>Accordance with AHRI Std 1200</p> <p>ETL Listed to UL 471</p> <p>ETL Listed to CAN/CSA 22.2 No. 1200</p> <p>ETL Sanitation to NSF/ANSI 7</p>
------------	---



In Accordance with  
**AHRI Std 1200**



### Important Notes:

- 1) ELECTRICAL NOTE: If GFCI is required, a GFCI breaker MUST be used in lieu of a GFCI receptacle.  
2) Glass warranty only applicable to first point of delivery.

**⚠ WARNING:** This product can expose you to chemicals, including Urethane (Ethyl Carbamate), which are known to the State of California to cause cancer and birth defects or other reproductive harm. For more information go to [www.P65Warnings.ca.gov](http://www.P65Warnings.ca.gov).